

METROPOLITAN PLANNING ORGANIZATION



Planning for Mobility,
Regional Open Space and Trails,
And Transportation Access to Parks



SOUTHERNNEVADA STRONG

OUR VALLEY. OUR VISION. OUR FUTURE.

Who We Are



Transit



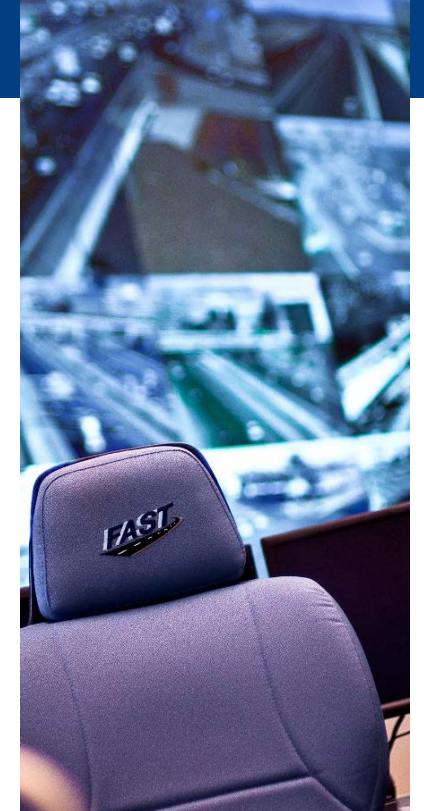
Bicycling



Planning



Roadway
Funding



Traffic
Management



MPO Functions



Engage



Travel
Forecasting



Regional
Planning



Plan



Project
Selection

Regional Planning



Implement New Federal Policy

Housing

Economic Development

Federal Lands Access

Climate Change



Provide Technical Assistance

Extreme Heat

Transportation
Electrification

Grants Coordination



Lead Regional Planning

Open Space and Trails

Population Projections

Regional Transportation
Plan (RTP)

Regional Plan
Administration (SNS)

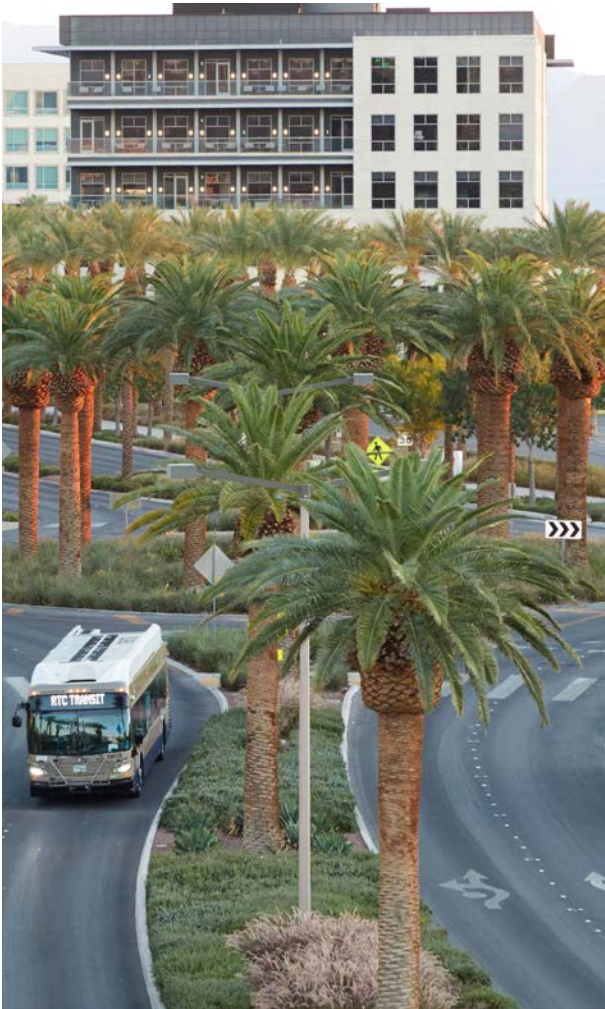
Managing Growth





SOUTHERNNEVADA STRONG

OUR VALLEY. OUR VISION. OUR FUTURE.





Regional Goals

Improve Economic
Competitiveness &
Education

Increase
Transportation
Choice

Invest in Complete
Communities

Build Capacity for
Implementation

ROST

Regional Open Space and Trails Work Group





Workgroup History

Team Formation



Planning



Collaboration



Regional Open Space Plan

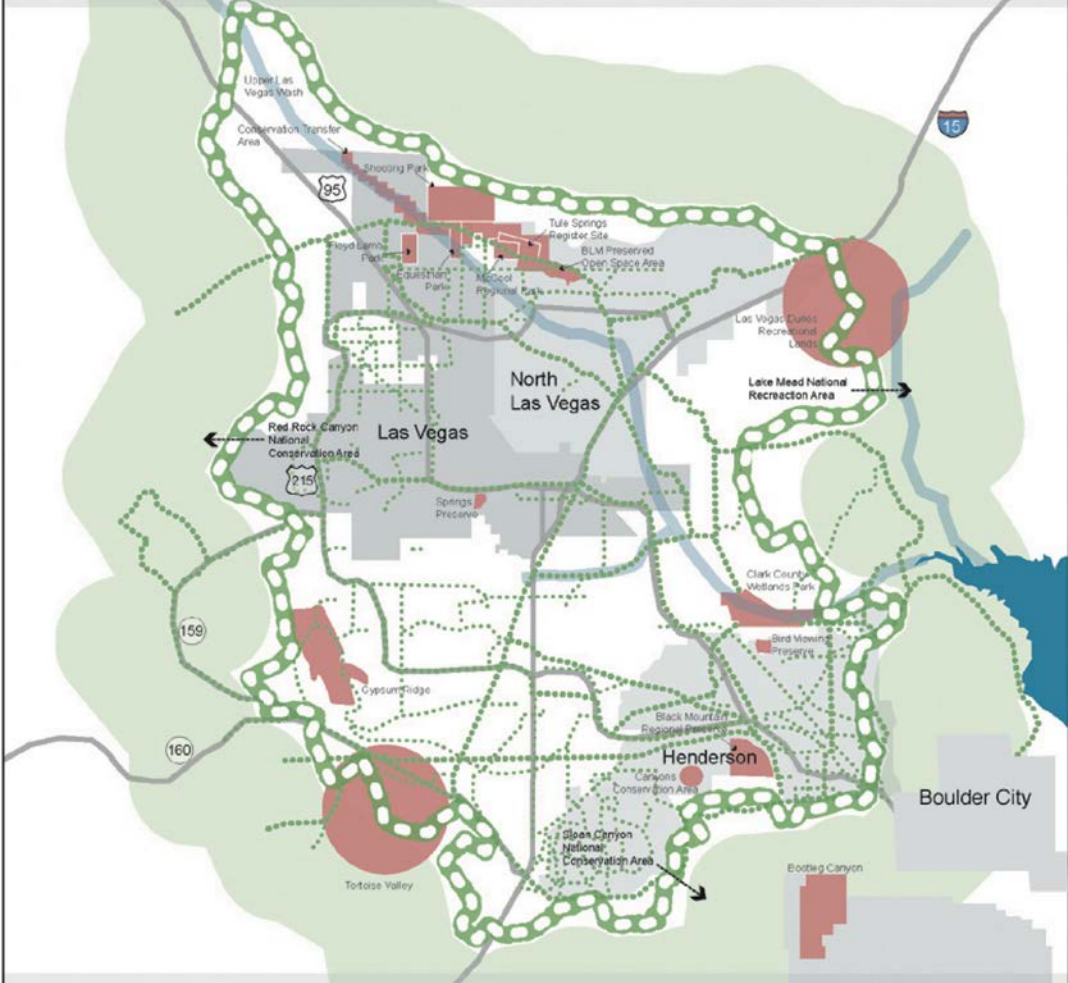
Southern Nevada Regional Planning Coalition
Adopted July 2006

A Policy Framework Report for the
Southern Nevada
Regional Planning
Coalition

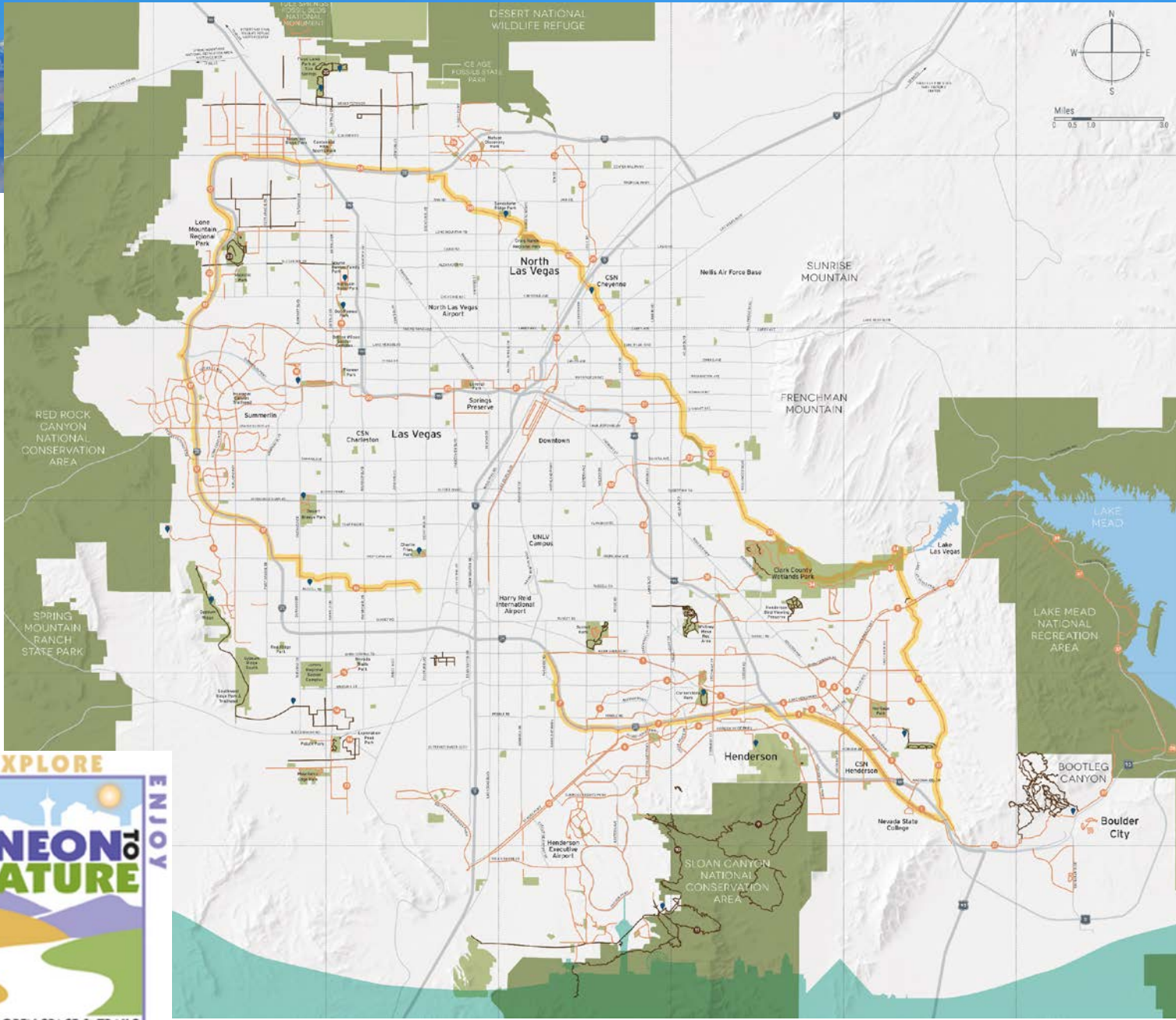


Prepared by:
Greenways Incorporated
The Greenway Team
JW Zunino Associates
The Trust for Public Land

REGIONAL OPEN SPACE PLAN:



OPPORTUNITIES CONCEPT MAP



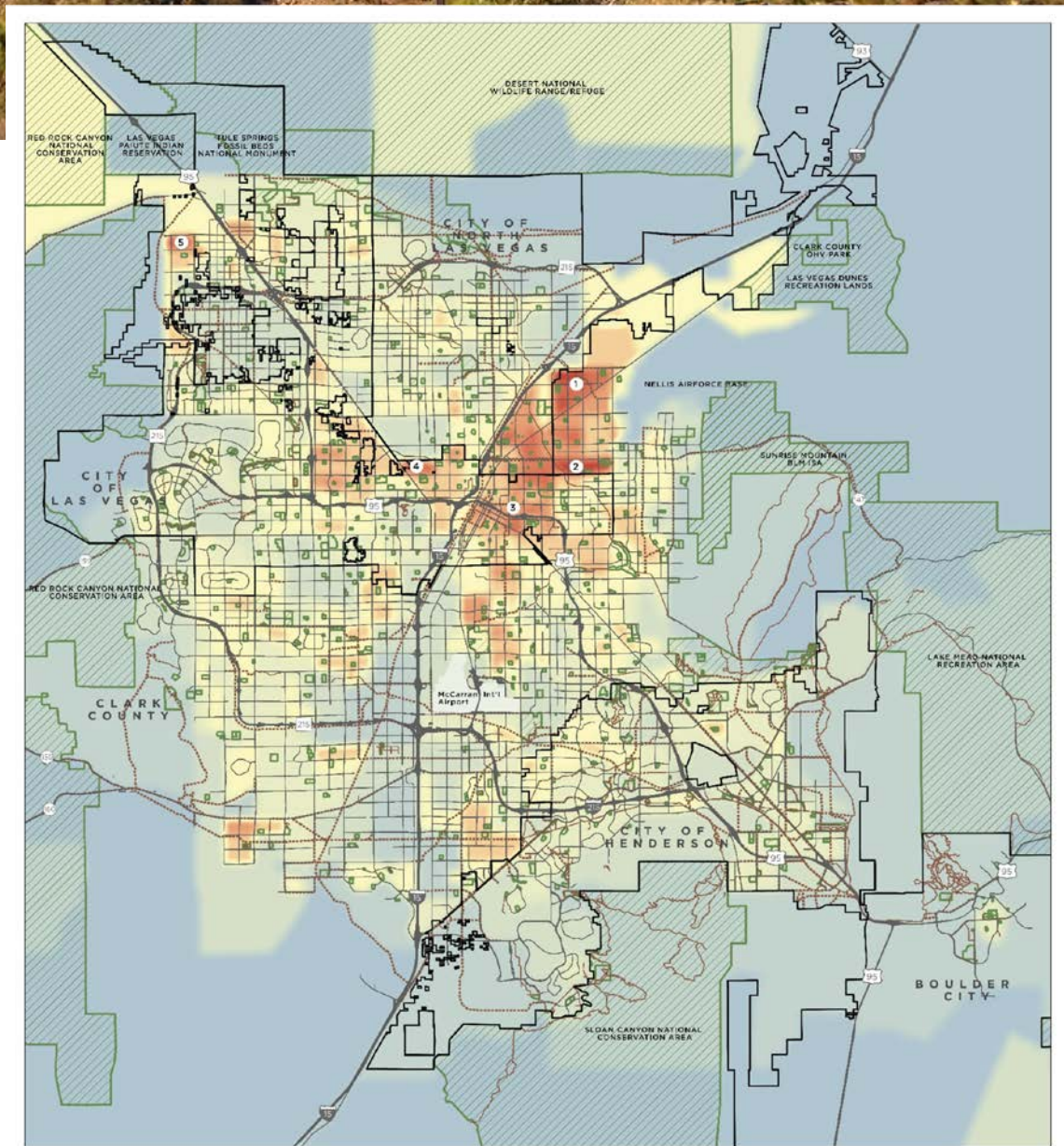
ESCAPE **EXPLORE** **ENJOY**

NEON NATURE

SoNev OPEN SPACE & TRAILS

Strategic Planning





CRITERIA

Access to Recreation

+

Community Health

=

Preliminary Open Space Analysis

+

Natural Resources

+

Cultural Resources

+

Equity



SUB-CRITERIA

- Parks
- Open Space
- Existing Trails
- Schools
- Population Density

- Coronary Disease
- Stroke
- Diabetes

- Future Analysis Sub-Criteria

- Future Analysis Sub-Criteria

- Future Analysis Sub-Criteria



Transportation Access to Parks

PROJECT GOALS



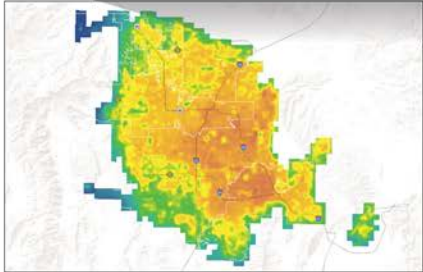
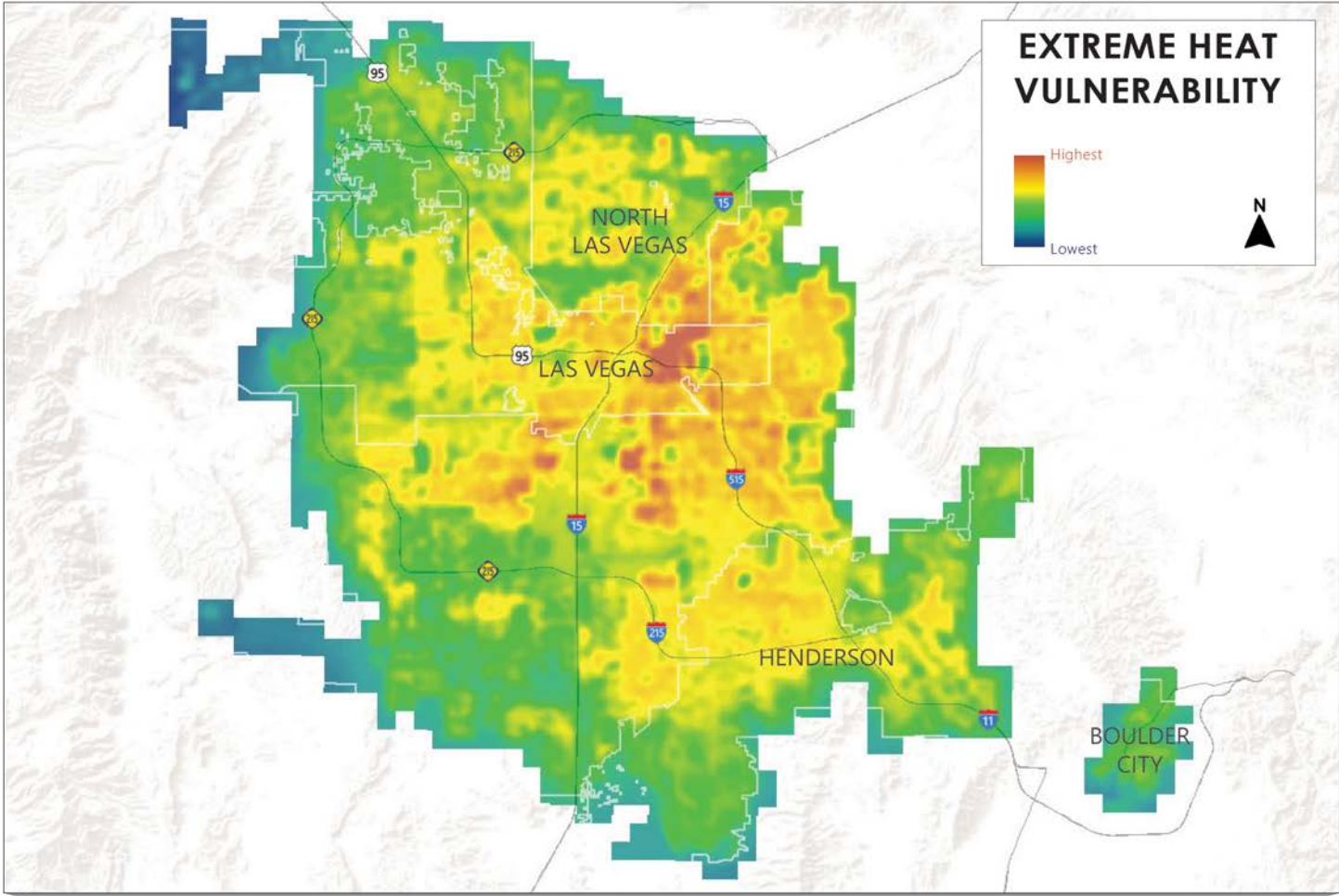
Identify priority park access areas



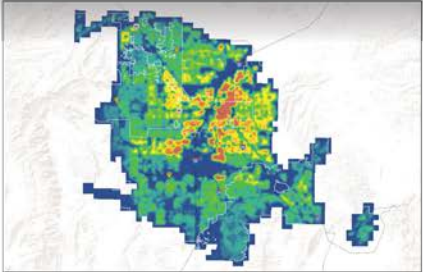
Prioritize future investments



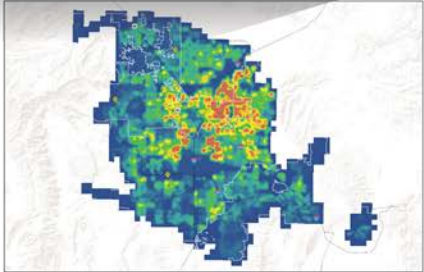
Develop strategies and recommendations for access



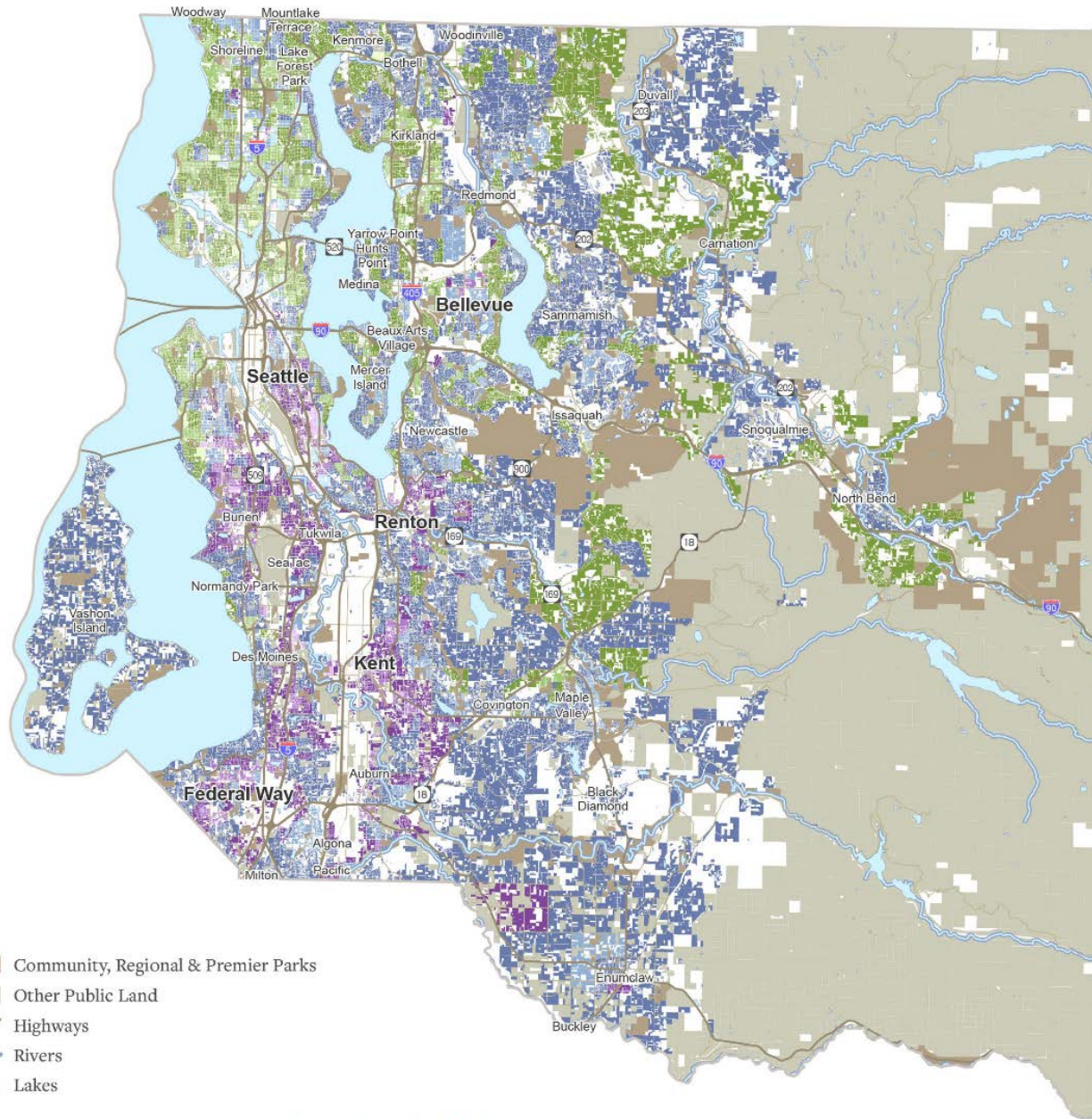
EXPOSURE



SENSITIVITY



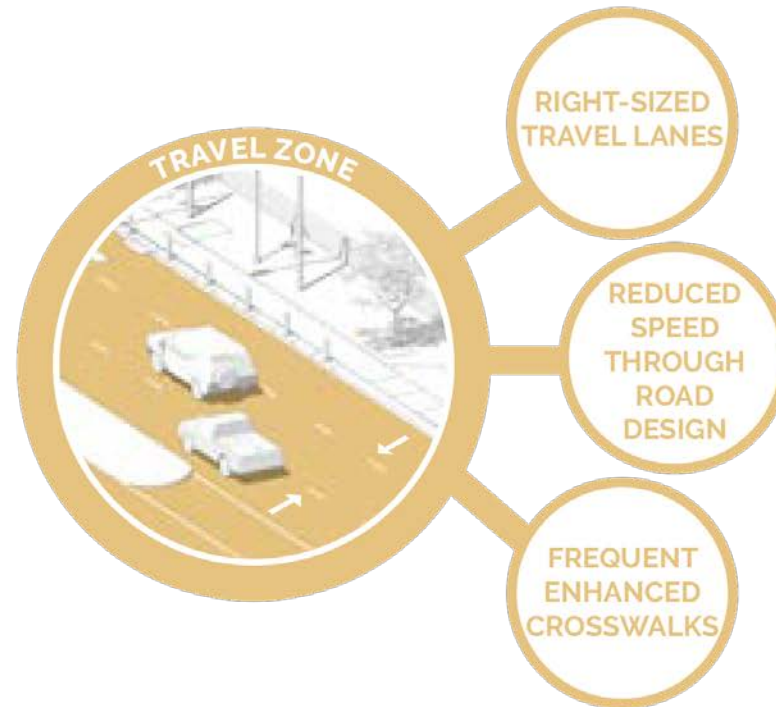
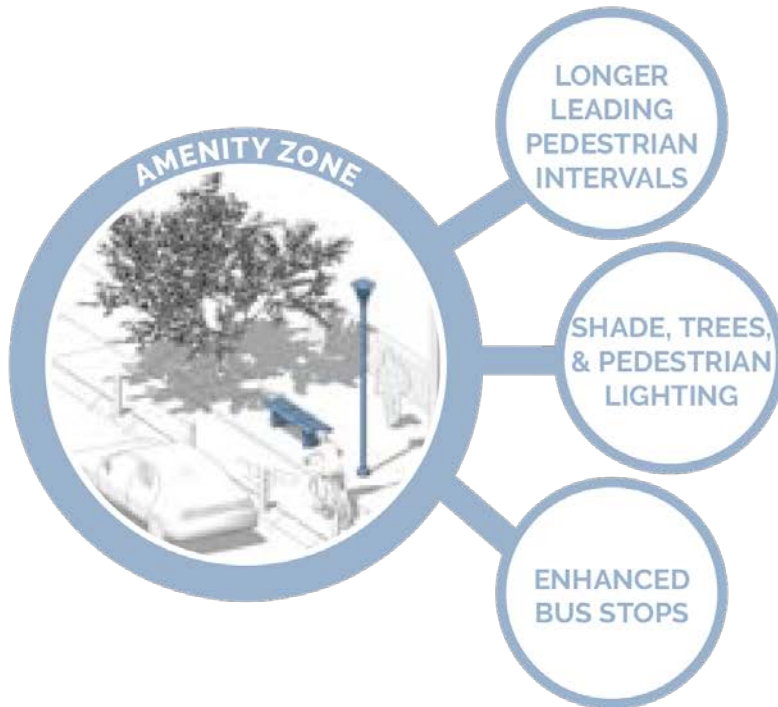
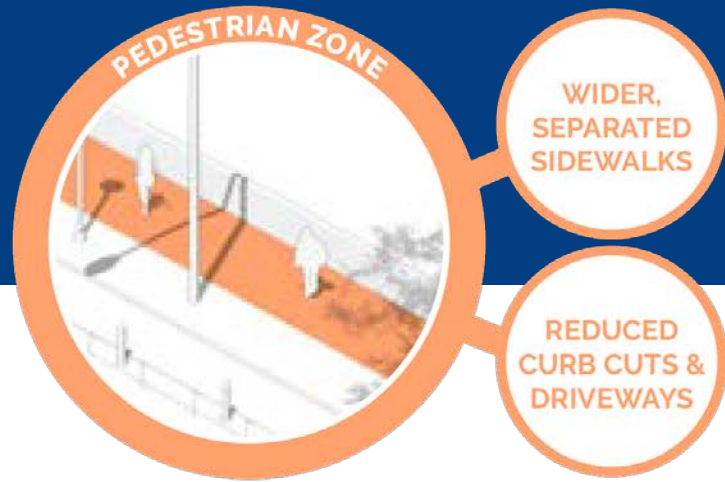
ADAPTIVE CAPACITY



- Community, Regional & Premier Parks
- Other Public Land
- Highways
- Rivers
- Lakes

OCTOBER 26, 2021
 SOURCE: US CENSUS, CDC, KING COUNTY METRO,
 KING COUNTY HEALTH, PSRC, WSDOT, FORIERA, US EPA





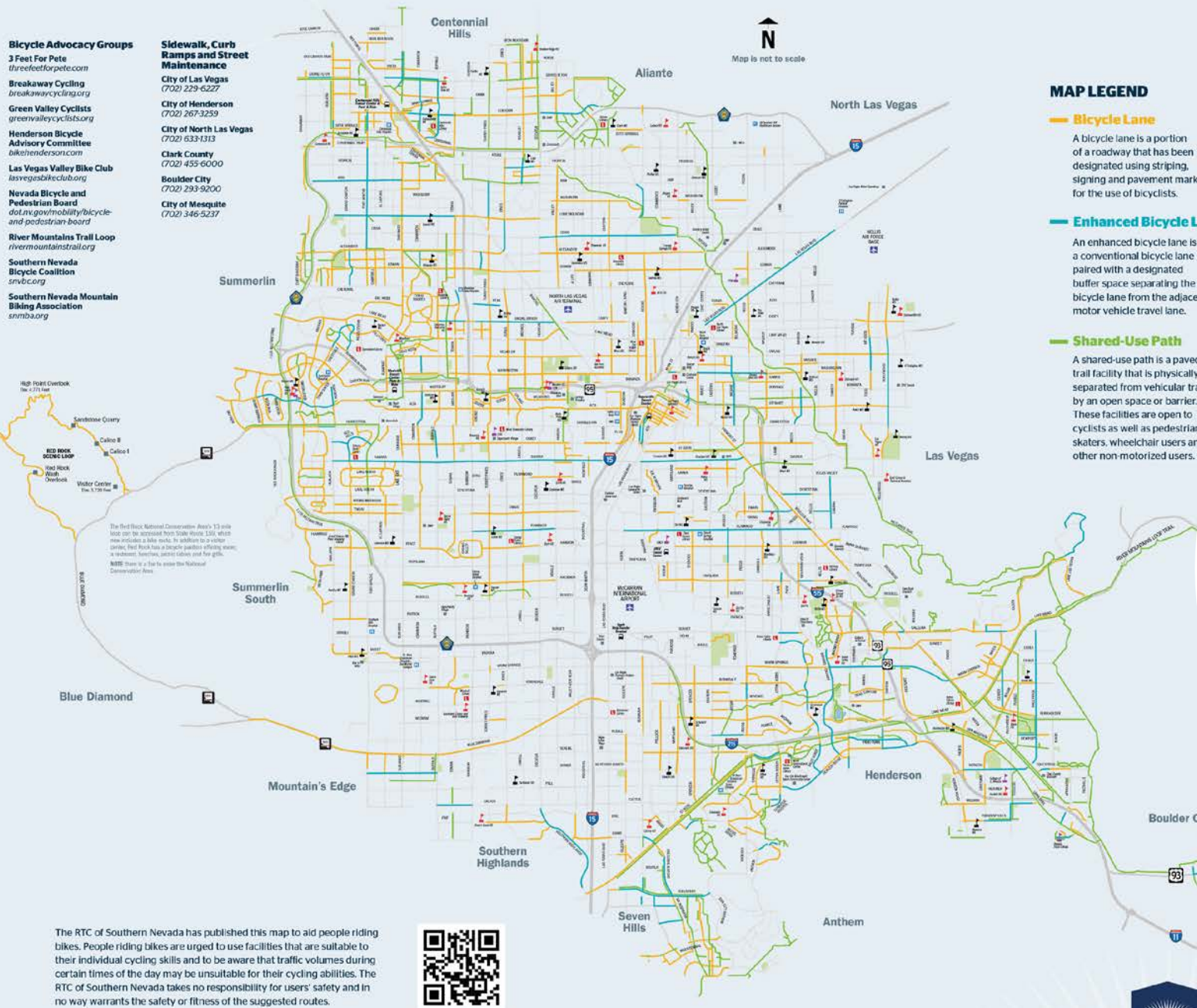
Bicycle Advocacy Groups

- 3 Feet For Pete
threefeetforpete.com
- Breakaway Cycling
breakawaycycling.org
- Green Valley Cyclists
greenvalleycyclists.org
- Henderson Bicycle Advisory Committee
bikehenderson.com
- Las Vegas Valley Bike Club
lasvegusbikeclub.org
- Nevada Bicycle and Pedestrian Board
dot.nv.gov/mobility/bicycle-and-pedestrian-board
- River Mountains Trail Loop
rivermountainstrail.org
- Southern Nevada Bicycle Coalition
snbc.org
- Southern Nevada Mountain Biking Association
snmba.org

Sidewalk, Curb Ramps and Street Maintenance

- City of Las Vegas
(702) 229-6227
- City of Henderson
(702) 267-3259
- City of North Las Vegas
(702) 633-1313
- Clark County
(702) 455-6000
- Boulder City
(702) 293-9200
- City of Mesquite
(702) 346-5237

High Road Overlook (to 4,771 feet)
Sandstone Quarry
RED ROCK SCENIC LOOP
Callejo II
Callejo I
Visitor Center (to 5,278 feet)
The Red Rock National Conservation Area's 13 mile loop can be accessed from State Route 159, which now includes a bike route. In addition to a visitor center, Red Rock has a bicycle parking facility, water, a restroom, benches, picnic tables and fire grills.
NOTE: There is a fee to enter the National Conservation Area.



MAP LEGEND

Bicycle Lane

A bicycle lane is a portion of a roadway that has been designated using striping, signing and pavement markings for the use of bicyclists.

Enhanced Bicycle Lane

An enhanced bicycle lane is a conventional bicycle lane paired with a designated buffer space separating the bicycle lane from the adjacent motor vehicle travel lane.

Shared-Use Path

A shared-use path is a paved trail facility that is physically separated from vehicular traffic by an open space or barrier. These facilities are open to cyclists as well as pedestrians, skaters, wheelchair users and other non-motorized users.

- Library
- Hospital
- Transit Center
- Middle School
- High School
- College/University



The RTC of Southern Nevada has published this map to aid people riding bikes. People riding bikes are urged to use facilities that are suitable to their individual cycling skills and to be aware that traffic volumes during certain times of the day may be unsuitable for their cycling abilities. The RTC of Southern Nevada takes no responsibility for users' safety and in no way warrants the safety or fitness of the suggested routes.



Existing Bike Share System



BIKE SHARE

25
stations

120
classic bikes

10
electric bikes

Launched in
Oct 2016



What's Next



Funding Gaps



RTP-FLAP
Coordination



Legacy
Projects



Evolution of
Parks



Bike Share
Expansion

Questions?



OUR VALLEY. OUR VISION. OUR FUTURE.

