



# NATURE EVERYWHERE

## COMMUNITIES



[childrenandnature.org](http://childrenandnature.org) // [@childrenandnature](https://twitter.com/childrenandnature) // [#NatureEverywhere](https://twitter.com/childrenandnature)

IN PARTNERSHIP WITH:





# NATURE EVERYWHERE

## COMMUNITIES

IN PARTNERSHIP WITH:

Children  
& Nature  
Network

**NLC** NATIONAL  
LEAGUE  
OF CITIES  
CITIES STRONG TOGETHER

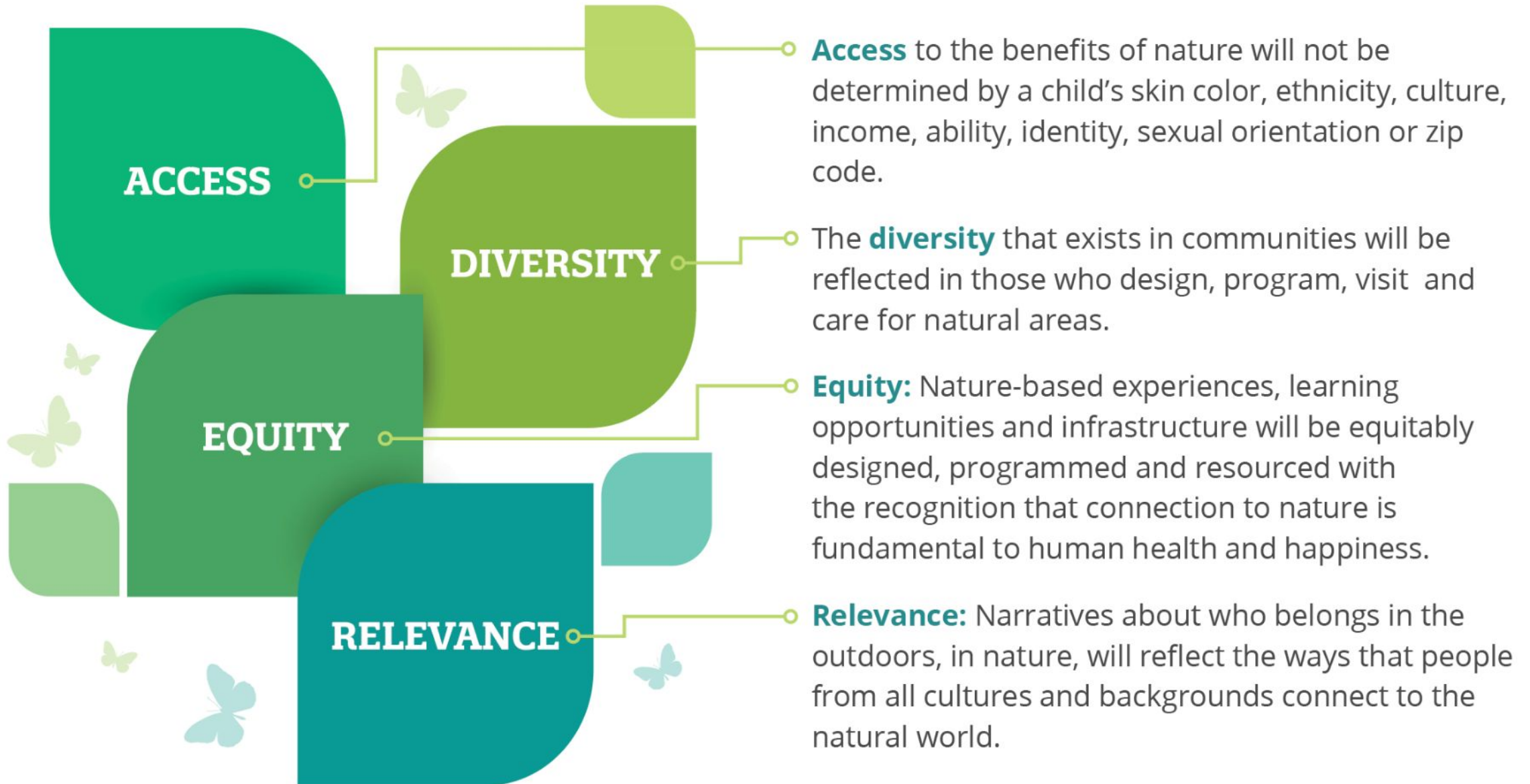
**KABOOM!**



**What's your dream for NV Youth in the Outdoors?**

# TRANSFORMATIONAL CHANGE

Our *Nature Everywhere* vision is based on transformational change, including these key outcomes:



# NATURE EVERYWHERE COMMUNITY TEAM JOURNEY

## YOUR JOURNEY



## HOW WE SUPPORT YOU



## COMMUNITY OUTCOMES



# COMMUNITY OUTCOMES

Policies, funding and infrastructure shift to support and prioritize equitable access to nature

Engaged cross-sector leadership, community momentum and shared decision making

Children's equitable access to nature is a widely-held ongoing community priority

All children have equitable access to nature everywhere they live, learn and play



## NATURE EXPOSURE

Free play in nature  
Nature walks  
Camp experiences  
Wilderness adventures  
Nature center programs  
Nature-based preschools  
Nature-based curricula  
Outdoor classes and schools  
Forest schools  
Classroom views  
Vegetation around early childhood institutions, schools and homes  
School gardens  
Animal-assisted learning

## THE LEARNER

- More able to concentrate\*
- Less stressed\*
- More self-disciplined\*
- More engaged
- More physically active, fit

## THE LEARNING CONTEXT

- Calmer, quieter, safer social context
- Warmer, more cooperative social context
- Autonomy and “loose parts”

## OUTCOMES

- **Academic Achievement**  
Increased retention of subject matter content\*  
Higher standardized test scores  
Better grades  
Better reading, math, writing skills  
Higher graduation rates
- **Personal Development**  
Better leadership skills  
Better communication skills  
More resilience  
Better critical thinking and problem solving  
Better spatial skills
- **Stewardship**  
Stronger connection to nature  
Stronger environmental values  
More pro-environmental behaviors





## NATURE EXPOSURE

Free play in nature  
Nature walks  
Camp experiences  
Wilderness adventures  
Nature center programs  
Nature-based preschools  
Nature-based curricula  
Outdoor classes and schools  
Forest schools  
Classroom views  
Vegetation around early  
childhood institutions, schools  
and homes  
School gardens  
Animal-assisted learning



## LEARNING OUTCOMES

- **Academic Achievement**  
Increased retention of subject matter content\*  
Higher standardized test scores  
Better grades  
Better reading, math, writing skills  
Higher graduation rates
- **Personal Development**  
Better leadership skills  
Better communication skills  
More resilience  
Better critical thinking and problem solving  
Better spatial skills
- **Stewardship**  
Stronger connection to nature  
Stronger environmental values  
More pro-environmental behaviors



\* = experimental evidence suggesting causality

## 101 public high schools in Michigan:

- Greater quantities of trees and shrubs from cafeteria as well as classroom windows:
  - Higher standardized test scores, graduation rates, percentages of students planning to attend a four-year college, and fewer occurrences of criminal behavior.
- Large expanses of landscape lacking natural features (parking, ball fields, grass)
  - Negative association with these same test scores and college plans.

Well-controlled / not causal



2. Mostly built



4. All natural

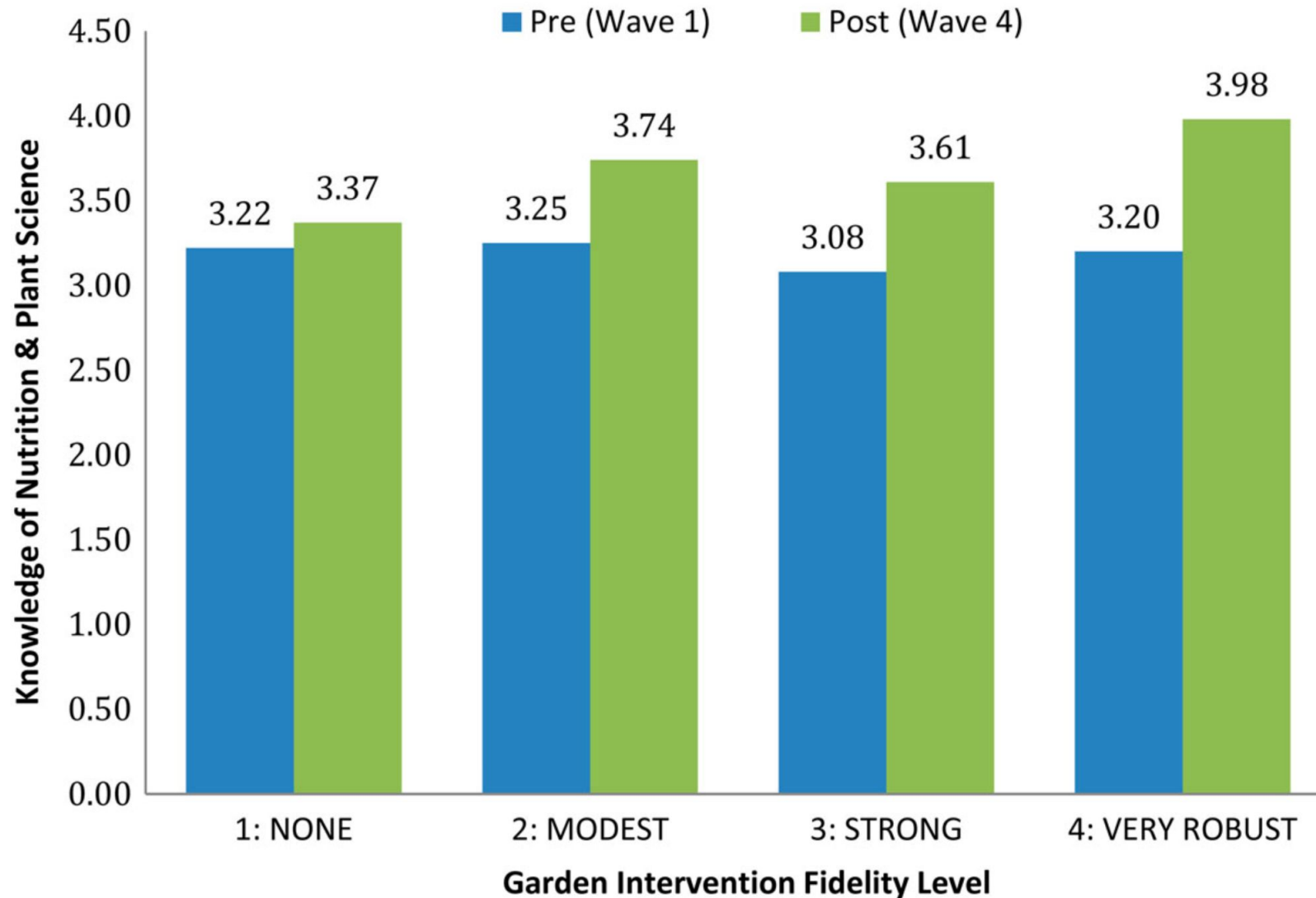


Figure 3. The effects of GIF-Sum level on science knowledge

# Policy

A myriad of policy and funding topic/issues areas

Considerations during the process:

- Relation to Nevada's youth, infrastructure, political feasibility, relation to Take 17 (*120 minutes in nature a week is good for health - new 10k steps*)
- Your areas of interest
- Areas of expertise
- Relevance to the legislation that created this bill

# Adapting to unique climates and landscapes

- Green and blue space
- Adapting to your unique geography
- Inside Out approach

# Strategies



**01: Green (Living) Schoolyards**

02: Nature Smart Libraries

**03: Youth Leadership  
Development (YLD)**

04: Out-of-School Time

**05: Early Childhood Nature  
Connection (ECNC)**

**06: Children's Outdoor Bill of  
Rights (COBOR)**

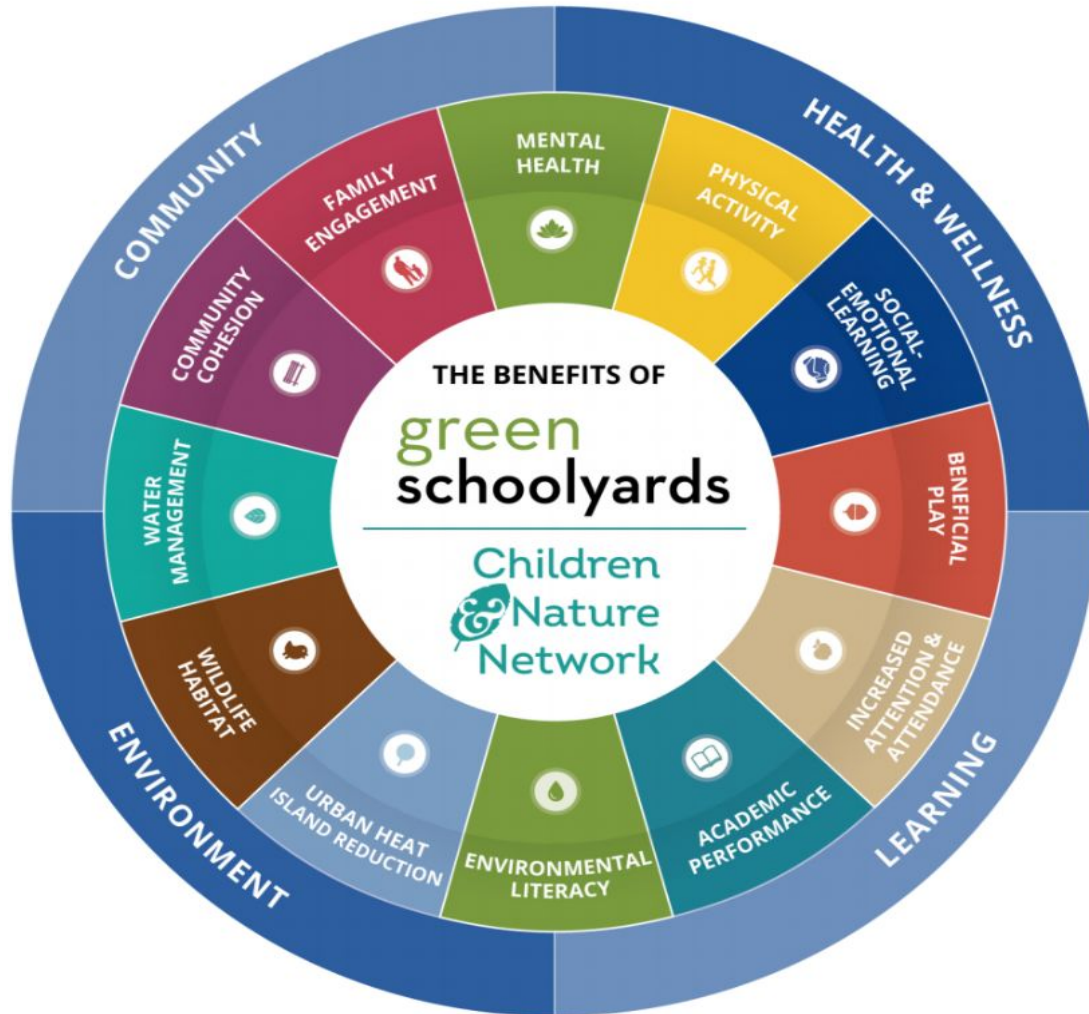
# Living Schoolyards

Children  
& Nature  
Network

IN PARTNERSHIP WITH:

**NLC** NATIONAL  
LEAGUE  
OF CITIES  
CITIES STRONG TOGETHER

**KABOOM!**



- Nature-filled, multi-functional school ground
- Designed for and by students, teachers, community
- Offers space to play, learn, explore, grow
- Open for community use
- Increases access to nearby parks
- Improves health and wellbeing

# Living Schoolyards

Can include...

- Outdoor classrooms
- Native & pollinator gardens
- Stormwater capture
- Traditional play equipment
- Natural play areas
- Edible gardens
- Trails
- Trees & shrubs



Children  
& Nature  
Network

IN PARTNERSHIP WITH:

**NLC** NATIONAL  
LEAGUE  
OF CITIES  
CITIES STRONG TOGETHER

**KABOOM!**



# Youth Leadership Development

## YOUTH LEADERSHIP PROGRAMS

- Include outdoor or civic leadership trainings
- Are executed in partnership with nonprofits and youth organizations
- Build youth connection to nature while developing leadership skills

## YOUTH CIVIC ENGAGEMENT

- Gives youth opportunity to provide input to city processes
- Is led by public agencies and city offices conducting planning
- Often include stipend programs

# Early Childhood Nature Connection (ECNC)

Children  
& Nature  
Network

IN PARTNERSHIP WITH:

**NLC** NATIONAL  
LEAGUE  
OF CITIES  
CITIES STRONG TOGETHER

**KABOOM!**



- Adding outdoor learning facilities early childhood programs
- Incorporating nature play spaces in local parks and public spaces.
- Delivering nature-based preschool and nature-based programs to children and families.

# Children's Outdoor Bill of Rights (COBOR)

A Children's Outdoor Bill of Rights (COBOR) illustrates what equitable access to nature should look like and establishes a common foundation and high aspirations for nature connections in a city.

## WHAT IS A COBOR?

- Outdoor experiences that every child has a right to experience
- A public facing symbol of goals for children and nature
- A messaging tool about the importance of nature connection
- A Mayoral proclamation, a City Council resolution, a value statement, or a framework for a program

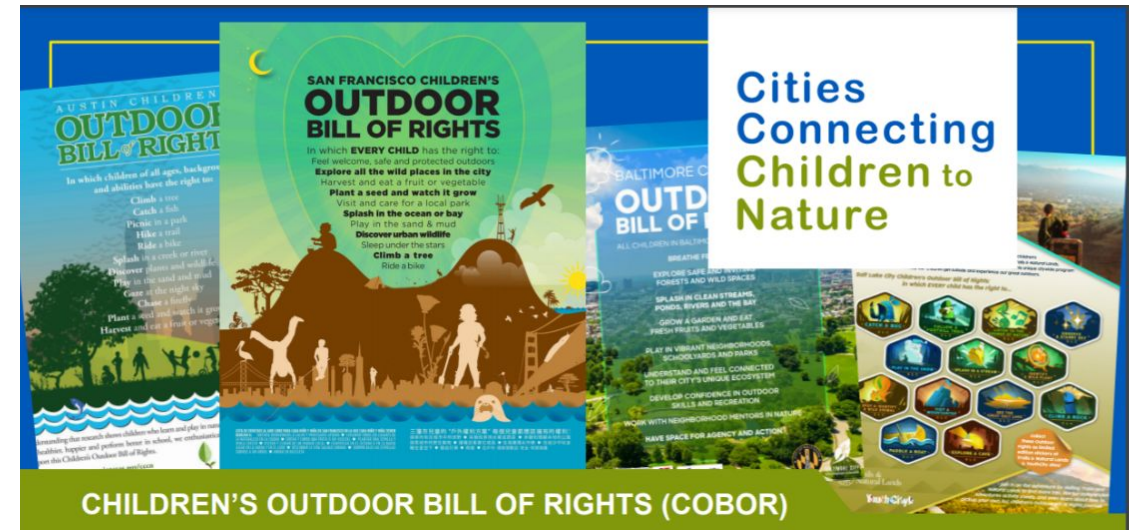
# Living Schoolyards

## BENEFITS OF COBOR

- Articulate commitment to nature access
- Galvanize community and leaders around a common vision
- Raise awareness of benefits of nature
- Establish a commitment to equity



IN PARTNERSHIP WITH:



# Questions?

**Stay in touch:**

**David Beard**

Director of Policy &  
Government Affairs

[david@childrenandnature.org](mailto:david@childrenandnature.org)

**Melanie Robinson**

Program Manager - Children &  
Nature

[mrobinson@nlc.org](mailto:mrobinson@nlc.org)



# Thank you!

IN PARTNERSHIP WITH:

